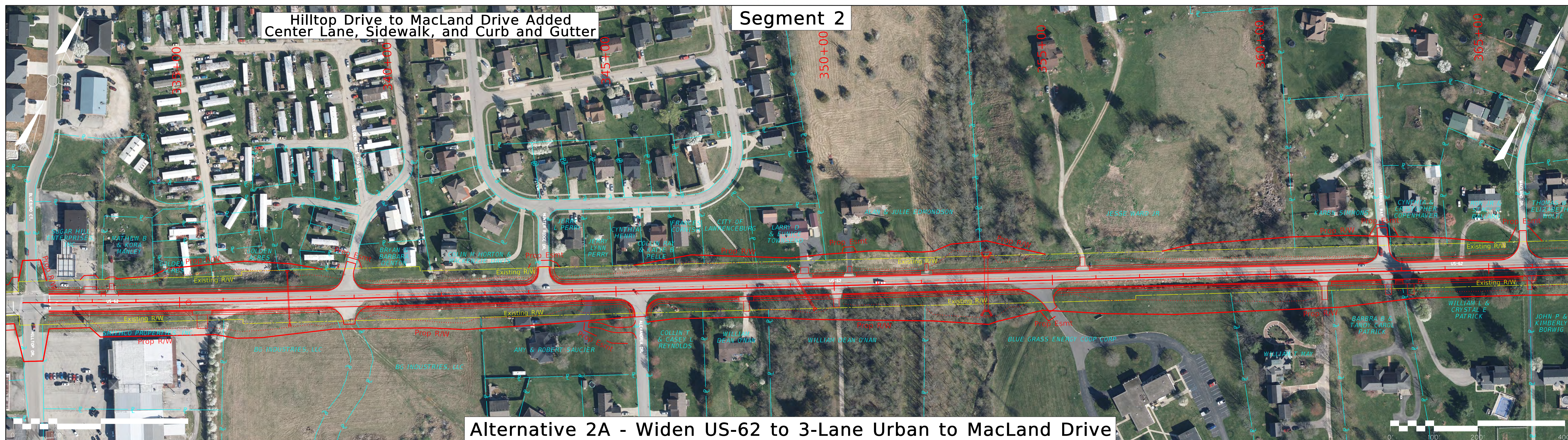
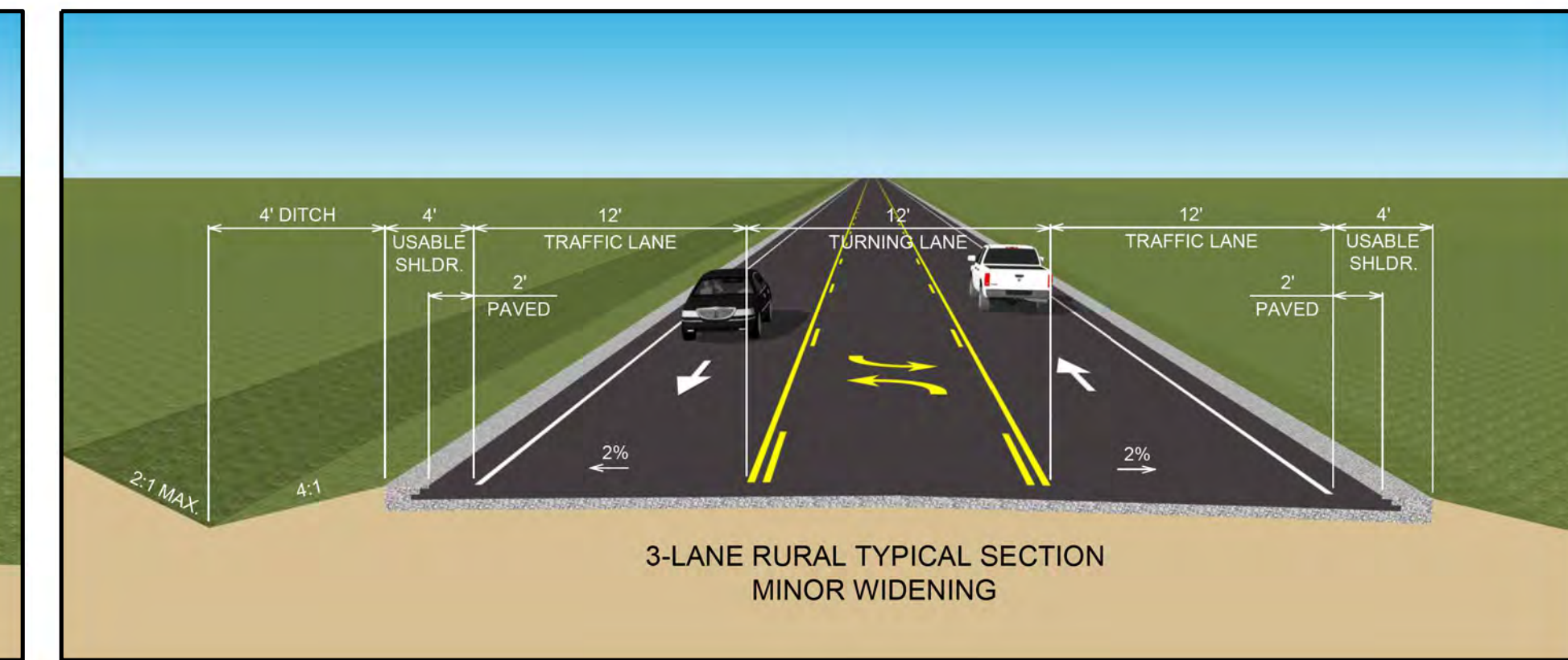
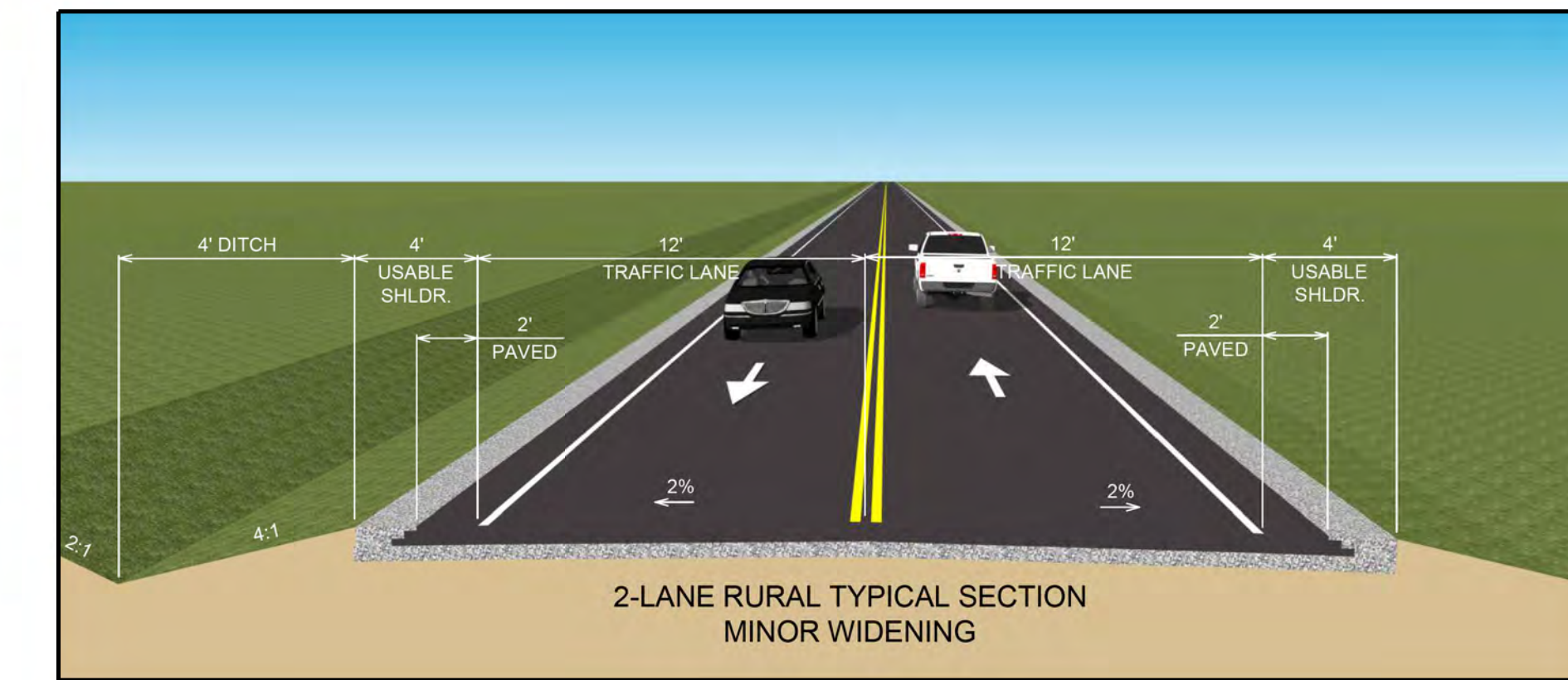
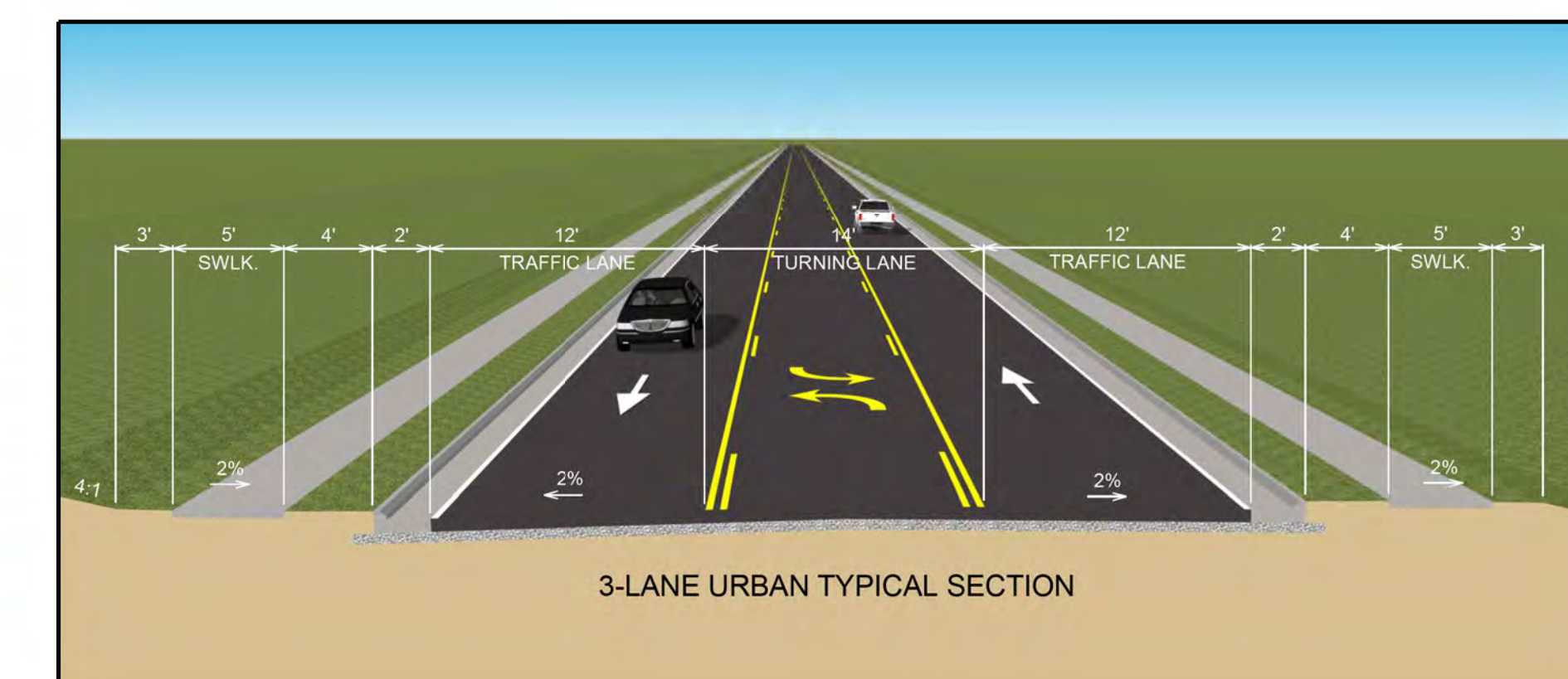




Segment 2		
Alternative 1 - Minor Widening		
Right of Way	(No.)	1
Relocations	(Ac)	1
Right of Way Acquired	(Ac)	0.03
Easements	(Ac)	0.03
Number of Parcels	Ea	14
<b>Design Geometry</b>		
Maximum Grade	%	5.1%
Design Speed	mph	45
<b>Utility Impacts</b>		
Gas Line	Ft	3,000
Water Line	Ft	5,790
Sewer Line	Ft	3,100
Septic System Disturbed	Ea	0
Utility Poles	Ea	0
<b>Construction Cost</b>		
Drainage	\$	187,680
Retaining Wall	\$	0
Sidewalk and Curb & Gutter	\$	0
Pavement	\$	1,307,752
Earthwork	\$	104,960
Misc. and Contingency (50%)	\$	800,156
<b>Total Cost (Construction Only)</b>	<b>\$</b>	<b>2,491,000</b>



Segment 2		
Alternative 2A - Urban 3-Lane		
Right of Way	(No.)	1
Relocations	(Ac)	2.3
Right of Way Acquired	(Ac)	0.25
Easements	(Ac)	0.25
Number of Parcels	Ea	21
<b>Design Geometry</b>		
Maximum Grade	%	5.11%
Design Speed	mph	45
<b>Utility Impacts</b>		
Gas Line	Ft	2,453
Water Line	Ft	9,150
Sewer Line	Ft	5,007
Septic System Disturbed	Ea	0
Utility Poles	Ea	13
<b>Construction Cost</b>		
Drainage	\$	980,410.00
Retaining Wall	\$	27,065.12
Sidewalk and Curb & Gutter	\$	361,920.00
Pavement	\$	716,177.28
Earthwork	\$	350,504.00
Misc. and Contingency (50%)	\$	1,216,038.20
<b>Total Cost (Construction Only)</b>	<b>\$</b>	<b>3,655,000</b>



Segment 2		
Alternative 2B - Urban 3-Lane to Rural 3-Lane		
Right of Way	(No.)	1
Relocations	(Ac)	2.5
Right of Way Acquired	(Ac)	0.25
Easements	(Ac)	0.25
Number of Parcels	Ea	21
<b>Design Geometry</b>		
Maximum Grade	%	5.11%
Design Speed	mph	45
<b>Utility Impacts</b>		
Gas Line	Ft	3,480
Water Line	Ft	9,952
Sewer Line	Ft	5,099
Septic System Disturbed	Ea	0
Utility Poles	Ea	16
<b>Construction Cost</b>		
Drainage	\$	523,490.00
Retaining Wall	\$	27,065.12
Sidewalk and Curb & Gutter	\$	102,500.00
Pavement	\$	1,223,693.12
Earthwork	\$	291,600.00
Misc. and Contingency (50%)	\$	1,084,174.12
<b>Total Cost</b>	<b>\$</b>	<b>3,255,000</b>

